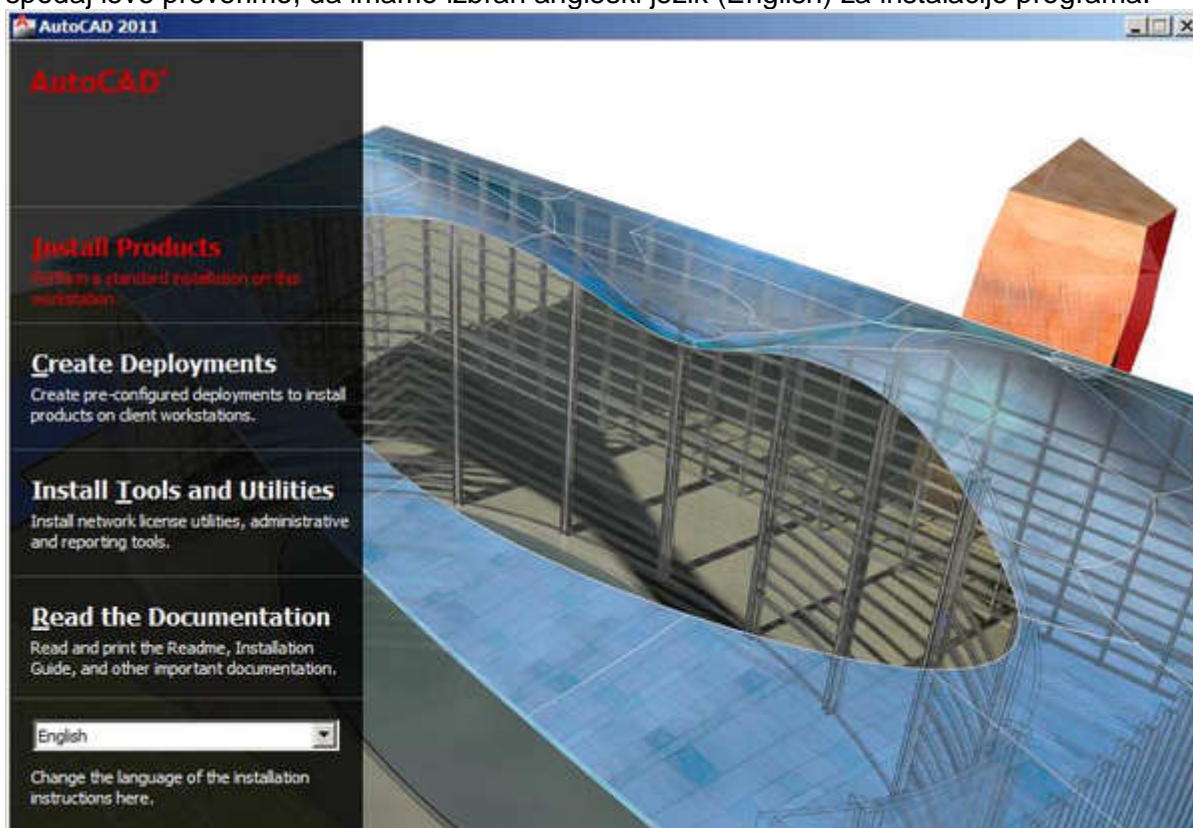


# AUTOCAD 2011

1. Ob vstavitvi CD-ja v pogon se instalacija začne izvajati samodejno. V nasprotnem primeru zaženemo datoteko **setup.exe** iz programa Windows Explorer.
2. Odpre se pogovorno okno z instalacijskim menijem, kjer izberemo opcijo »**Install Products**« in spodaj levo preverimo, da imamo izbran angleški jezik (English) za instalacijo programa.

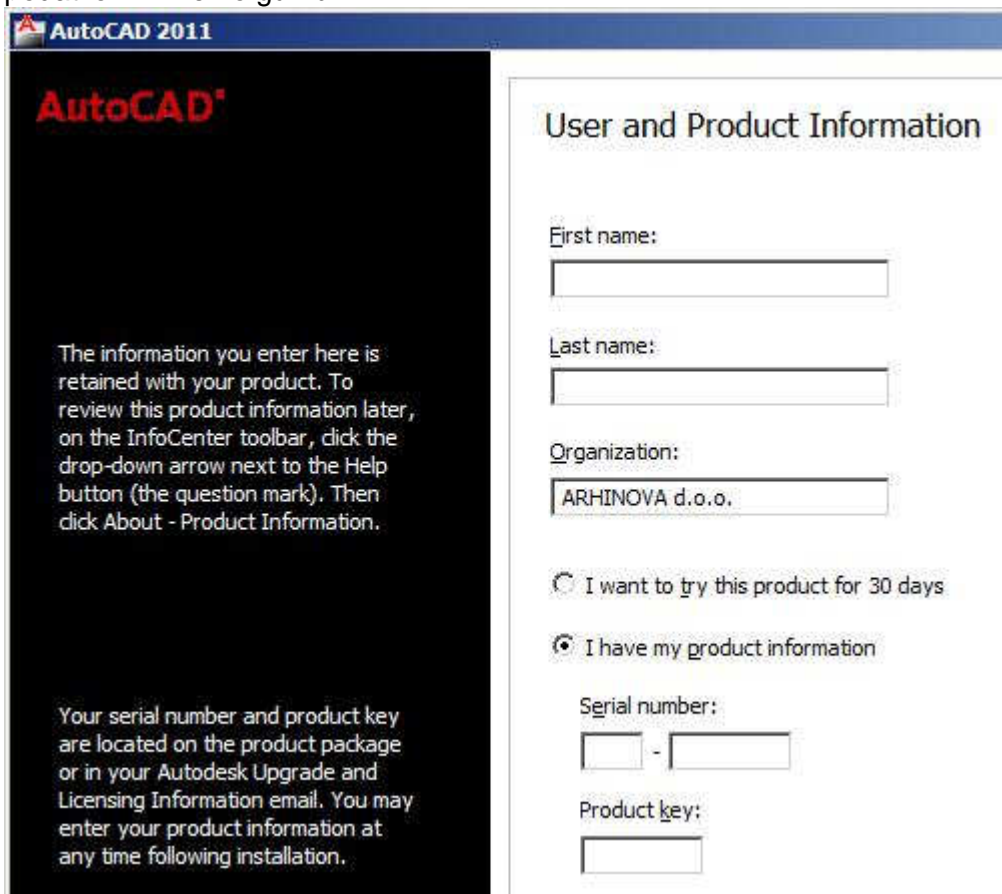


3. V pogovornem oknu 'Select the Products to Install' dodatno odključamo opciji »**Autodesk Design Review 2011**« in za instalacijo bogate knjižnice materialov »**Autodesk Material Library 2011 Medium Image library**«. Kliknemo na gumb NEXT.



4. V kolikor se v novem pogovornem oknu strinjamo s pogoji programske licence, izberemo opcijo »**I Accept**« in nato kliknemo na gumb NEXT.

5. V pogovornem oknu 'Product and User information' vpišemo naslednje podatke: Ime, Priimek in Naziv podjetja. Za licenčne instalacije odključamo »I have my product information« in spodaj v okenca vpišemo Serijsko številko programa in Product key (odčitamo ju s škatle). Po vpisu vseh podatkov kliknemo gumb NEXT.



**AutoCAD 2011**

**AutoCAD®**

The information you enter here is retained with your product. To review this product information later, on the InfoCenter toolbar, click the drop-down arrow next to the Help button (the question mark). Then click About - Product Information.

Your serial number and product key are located on the product package or in your Autodesk Upgrade and Licensing Information email. You may enter your product information at any time following installation.

**User and Product Information**

First name:

Last name:

Organization:

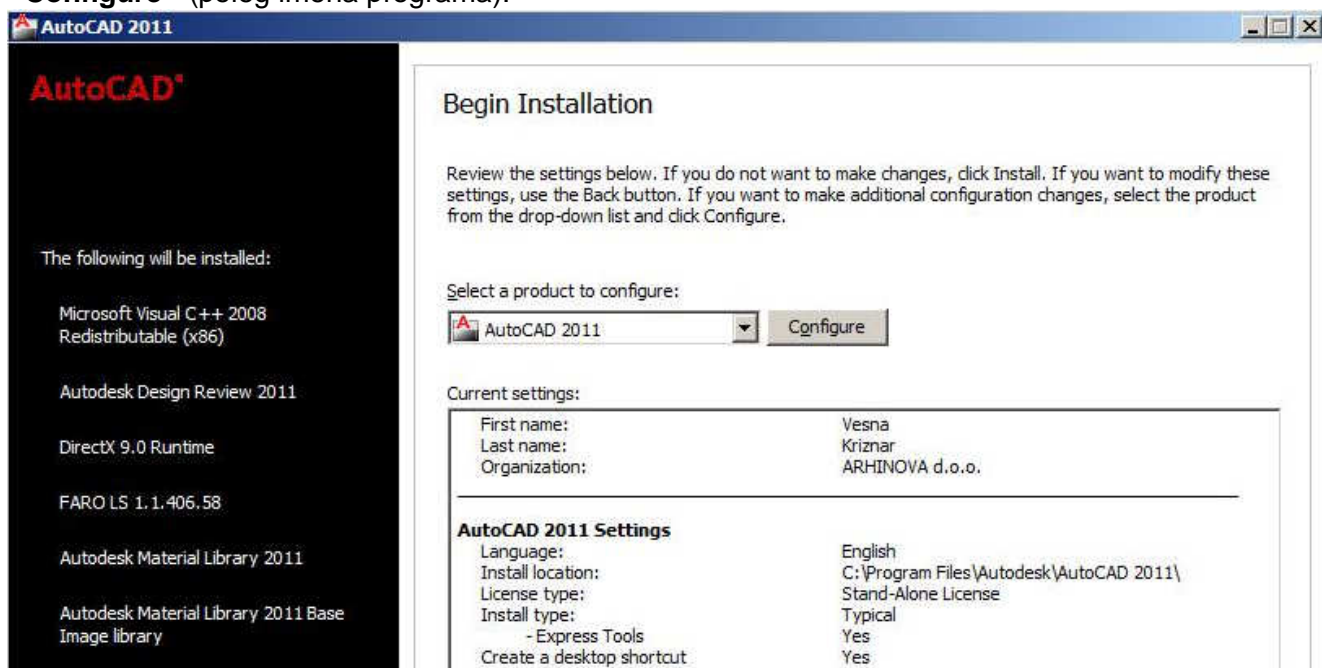
I want to try this product for 30 days

I have my product information

Serial number:  -

Product key:

6. V naslednjem pogovornem oknu 'Begin Installation' so v spodnjem delu okna vidne trenutne nastavitve za instalacijo tega programa. Za dodatne nastavitve pri instalaciji kliknemo gumb »Configure« (poleg imena programa).



**AutoCAD 2011**

**AutoCAD®**

The following will be installed:

- Microsoft Visual C++ 2008 Redistributable (x86)
- Autodesk Design Review 2011
- DirectX 9.0 Runtime
- FARO LS 1.1.406.58
- Autodesk Material Library 2011
- Autodesk Material Library 2011 Base Image library

**Begin Installation**

Review the settings below. If you do not want to make changes, click Install. If you want to modify these settings, use the Back button. If you want to make additional configuration changes, select the product from the drop-down list and click Configure.

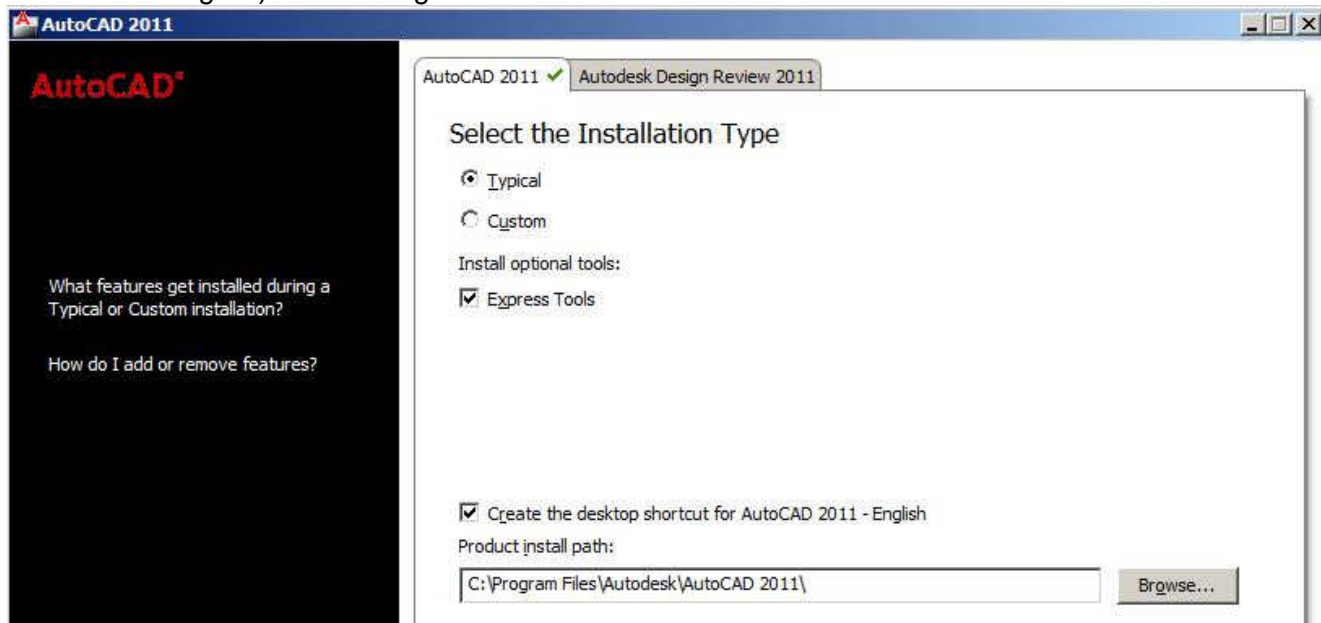
Select a product to configure:

Current settings:

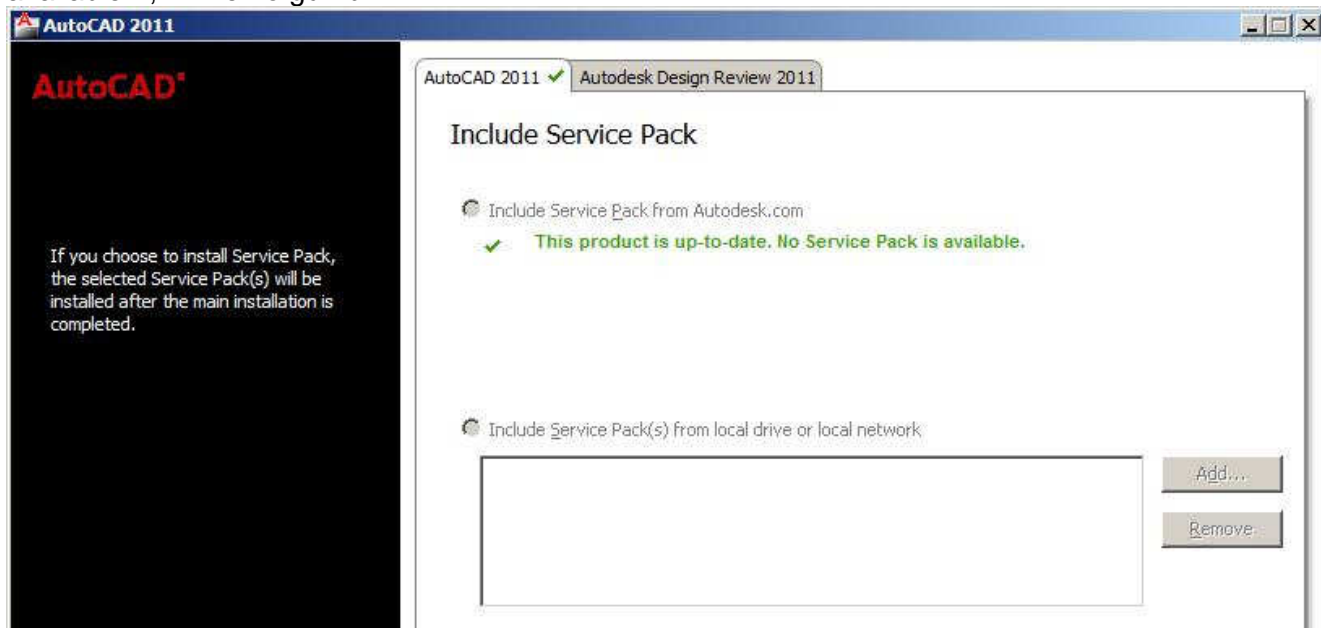
First name:	Vesna
Last name:	Kriznar
Organization:	ARHINOVA d.o.o.
<b>AutoCAD 2011 Settings</b>	
Language:	English
Install location:	C:\Program Files\Autodesk\AutoCAD 2011\
License type:	Stand-Alone License
Install type:	Typical
-Express Tools	Yes
Create a desktop shortcut	Yes

7. Zaporedoma se bodo odpirale 4 strani pogovornih oken z naslednjimi nastavitvami:

- STRAN 1: 'Select the Licence Type' - izberemo »**Stand-alone**« licenco, v primeru mrežne verzije bi izbrali opcijo Network licence. Kliknemo gumb NEXT.
- STRAN 2: 'Select the Installation type' - izberemo opcijo »**Typical**«. Odključamo instalacijo orodij Express Tools in izdelavo ikone za bližnjico na namizju (Create the desktop shortcut for AutoCAD – English). Kliknemo gumb NEXT.



- STRAN 3: 'Include Servis Pack' - če piše 'This product is up-to-date. No Servis Pack is available.', kliknemo gumb NEXT.



- STRAN 4: Okno 'Configuration Complete' potrdimo s klikom na gumb »**Configuration complete**«.



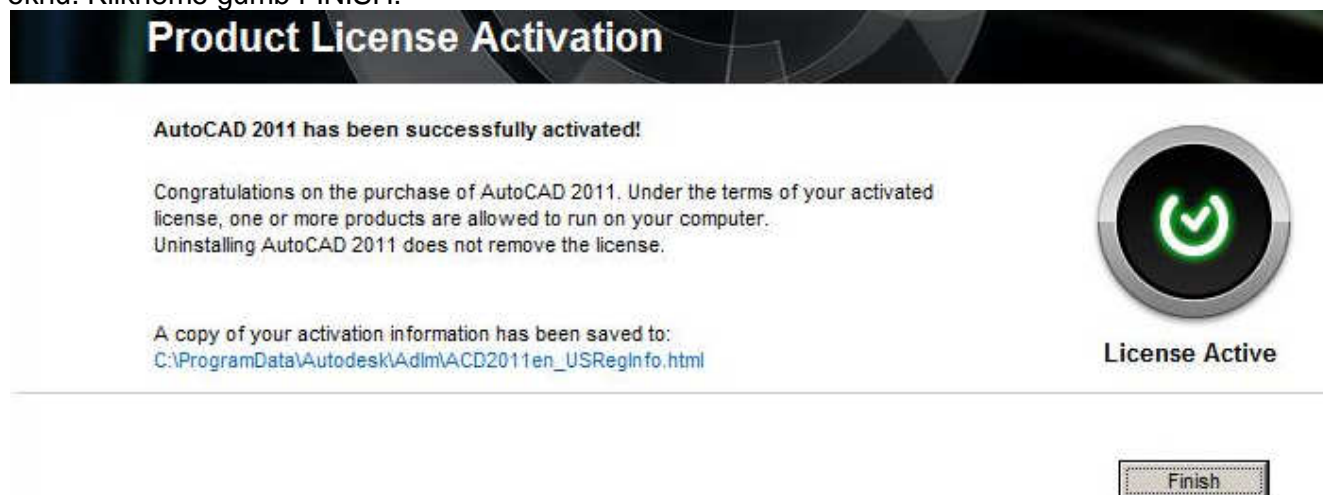
- Ponovno se vrnemo na pogovorno okno 'Begin Installation'. Sedaj so v spodnjem oknu naše nastavitve za instalacijo. Kliknemo na gumb »Install«.
- Če se slučajno pred instalacijo odpre spodnje pogovorno okno, kliknemo gumb YES in instalacija se bo pričela.



- Po uspešni nekajminutni instalaciji se odpre pogovorno okno 'Instalation complete'. Na koncu kliknemo le še gumb »Finish« in računalnik ponovno zaženemo.

## AVTORIZACIJA PROGRAMA:

- Zaženemo program AutoCAD 2011. V oknu 'Welcome to AutoCAD 2011' kliknemo gumb »Activate«.
- V oknu 'Product Licence Activation Options' izberemo »Connect now and activate!« in nato gumb NEXT. (Pred tem mora biti vzpostavljena internetna povezava.)
- Zadnje okno 'Product Licence Activation' nam javi uspešno avtorizacijo programa. Pri tem se samodejno izdela datoteka z informacijami o avtorizaciji. Ta se shrani na povezavi prikazani v tem oknu. Kliknemo gumb FINISH.



Vkolikor se po 1.točki pojavi pogovorno okno 'Log In' za vnos uporabniškega imena in gesla, sledite naslednjemu postopku:

- Ker podatkov ne vemo, kliknemo spodaj desno pod oknom za geslo na link za pridobitev uporabniškega imena »Forgot your User ID?«.

### Log In

Are you a New User? Click "Create User ID Now".

Please enter your User ID, Password and click "Log In" to access the Autodesk service you requested. You can use your existing Subscription Center or Partner Center User ID and Password.

Registered Autodesk users are able to access various Autodesk services including:

- Product Registration and Activation
- Subscription Center
- Partner Center
- Web Support

Users from Japan with an existing Contact ID, please [click here](#).

The information you provide will be used by Autodesk to register and/or issue your activation code, to keep you informed about our products and services, and to ensure that you benefit from being an authorized Autodesk user. Autodesk does not sell or otherwise provide your information to anyone outside of Autodesk or our Authorized Business Partners. If you wish to correct your registration data, please click the link below to contact Autodesk or contact your local Autodesk office.

#### Log-in to Autodesk

Don't have an Autodesk User ID?  
Signing up is quick and easy!

[Create User ID Now](#) >


User ID

Password

Remember Me

[Forgot your User ID?](#)  
[Forgot your Password?](#)

- b) V oknu 'Forgot User ID' v prazna polja vpišemo svoje podatke: Ime, Priimek, E-mail naslov in kliknemo NEXT.



### Forgot User ID

Please enter the following information. All fields are required.

Your First Name

Your Last Name

Your E-mail Address

[<< Back](#) [Close](#) [Next >>](#)

- c) Če se pojavi še varnostno vprašanje, npr. V katerem mestu ste rojeni?, vpišemo podatek in kliknemo NEXT.

### Security Question


Please enter the following information. All fields are required except where noted.

Please answer the following Security question

What city were you born?

[Close](#) [Next >>](#)

- d) Okno 'Retrieve User ID or Password' nam sporoča, da je uporabniško ime poslano na naš e-mail naslov. Kliknemo gumb NEXT.
- e) Ponovno smo v oknu 'Log In' za vnos uporabniškega imena in gesla. Tokrat ne vemo gesla, zato spodaj desno pod oknom za geslo kliknemo na link za pridobitev gesla »**Forgot your Password?**«.



### Log In

Are you a New User? Click "Create User ID Now".

Please enter your User ID, Password and click "Log In" to access the Autodesk service you requested. You can use your existing Subscription Center or Partner Center User ID and Password.

Registered Autodesk users are able to access various Autodesk services including:

- Product Registration and Activation
- Subscription Center
- Partner Center
- Web Support

Users from Japan with an existing Contact ID, please [click here](#).

The information you provide will be used by Autodesk to register and/or issue your activation code, to keep you informed about our products and services, and to ensure that you benefit from being an authorized Autodesk user. Autodesk does not sell or otherwise provide your information to anyone outside of Autodesk or our Authorized Business Partners. If you wish to correct your registration data, please click the link below to contact Autodesk or contact your local Autodesk office.

#### Log-in to Autodesk

Don't have an Autodesk User ID?  
Signing up is quick and easy!

[Create User ID Now](#)

User ID

Password

Remember Me

[Forgot your User ID?](#)  
[Forgot your Password?](#)

[Log In](#)

- f) V oknu 'Forgot Password' v prazna polja vpišemo svoje podatke: Uporabniško ime (tega odčitamo iz prejetega e-maila pod točko d.) in E-mail naslov. Kliknemo gumb NEXT.

### Forgot Password

Please enter the following information. All fields are required.

User ID

Your E-mail Address

- g) Če se ponovno pojavi enako varnostno vprašanje kot pod točko c)., npr. V katerem mestu ste rojeni?, vpišemo podatek in kliknemo NEXT.
- h) Okno 'Retrieve User ID or Password' ponovno sporoča, da je geslo poslano na naš e-mail naslov. Kliknemo gumb NEXT.
- i) Ponovno se odpre okno 'Log in' in tokrat lahko vpišemo uporabniško ime in geslo, ki smo ju odčitali iz obeh prejetih e-mailov. Kliknemo gumb NEXT.
- j) V oknu 'Change Password' iz varnostnih razlogov že takoj spremenimo geslo. V prvo polje vpišemo geslo, ki smo ga prejeli v e-mailu, v drugo in tretje polje pa vpišemo novo geslo. Kliknemo gumb SAVE.

### Change Password

User mojca.pecnik@arhinova.si's password has expired Change password for mojca.pecnik@arhinova.si

Password must contain:  
Between 8 and 12 characters  
At least three unique characters  
At least one alphabetic character  
At least one number

• Old Password

• New Password

• Confirm New Password

- k) Avtorizacijo programa nadaljujemo od 2.točke naprej.