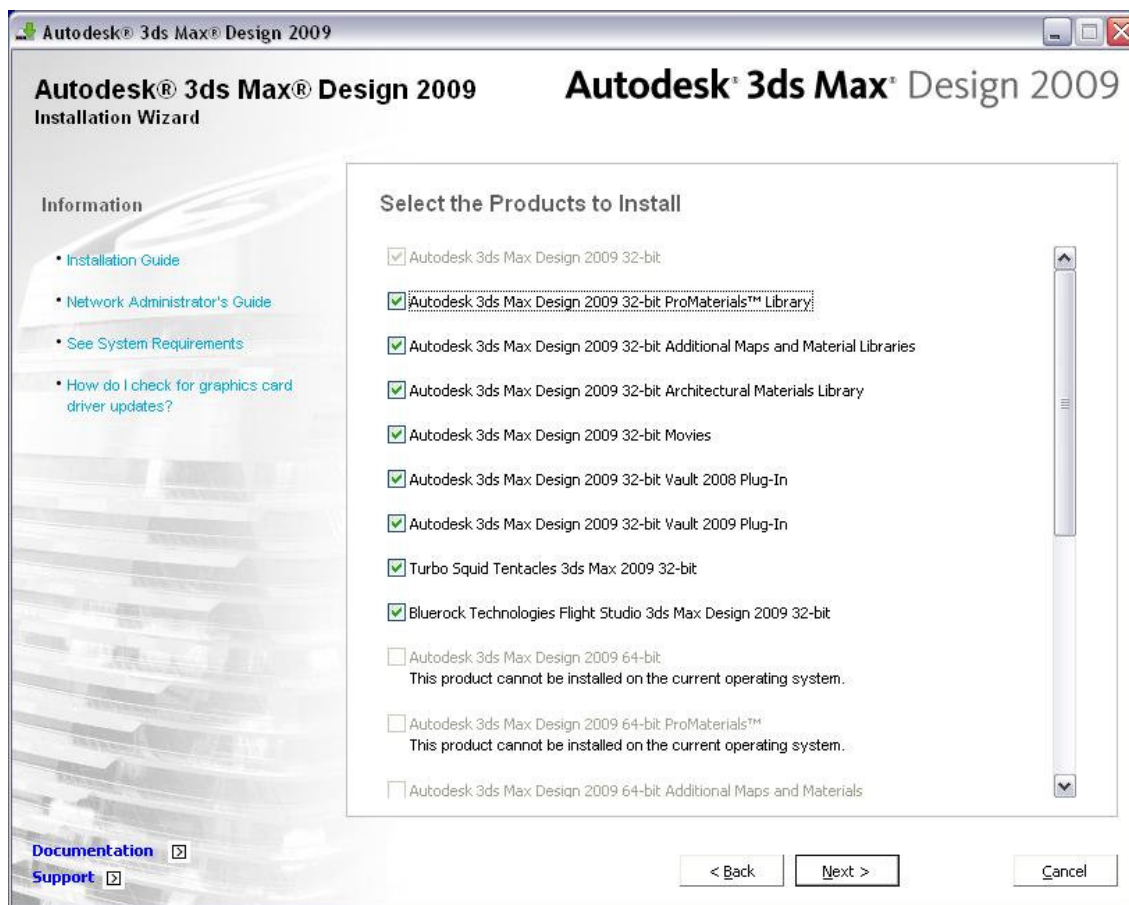


3DS MAX DESIGN 2009

1. Ob vstavitvi CD-ja v pogon se instalacija začne izvajati samodejno. V nasprotnem primeru zaženemo datoteko **setup.exe** iz programa Windows Explorer.
2. Odpre se pogovorno okno z instalacijskim menijem, kjer izberemo opcijo »Install Products«.



3. V naslednjem pogovornem oknu 'Select the Products to Install' z gumbom NEXT potrdimo predlagane nastavitve.



4. V kolikor se v novem pogovornem oknu strinjamo s pogoji programske licence, izberemo opcijo »I Accept« in nato piknemo gumb NEXT.

5. V pogovornem oknu 'Product and User information' vpišemo naslednje podatke: Serijsko številko vašega programa (odčitamo jo s škatle), Ime, Priimek in Naziv podjetja. Po vpisu podatkov piknemo gumb NEXT.

Autodesk® 3ds Max® Design 2009
Installation Wizard

Autodesk® 3ds Max® Design 2009

Information

- This information is used to personalize the product; it is not sent to Autodesk®.

Product and User Information

Serial number*:
[] - []

First name:
Vesna

Last name:
Kriznar

Organization:
ARHINOVA

6. V pogovornem oknu 'Review-Configure-Install' pustimo predlagane nastavitve in piknemo na gumb »Install«.

Autodesk® 3ds Max® Design 2009
Installation Wizard

Autodesk® 3ds Max® Design 2009

Information

The following will be installed:

- NET Framework Runtime 2.0 SP1
- DirectX® Runtime Update
- MSXML 6.0 Parser
- Autodesk Backburner 2008.1
- Autodesk 3ds Max Design 2009 32-bit
- Autodesk 3ds Max Design 2009 32-bit ProMaterials™ Library
- Autodesk 3ds Max Design 2009 32-bit Additional Maps and Material Libraries
- Autodesk 3ds Max Design 2009 32-bit Architectural Materials Library

Review - Configure - Install

The basic information required to install the products has been provided by you and is shown in the box below. The remaining configurations are currently set to the default values; also shown below. If you would like to make configuration changes, select the appropriate product from the drop down list and click the Configure button.

Select a product to configure:
Autodesk 3ds Max Design 2009 32-bit [v] Configure

Current settings:

First name:	Vesna
Last name:	Kriznar
Organization:	ARHINOVA

Autodesk 3ds Max Design 2009 32-bit Settings

License type:	Stand-Alone License
Install type:	Typical
Install location:	C:\Program Files\Autodesk\3ds Max 2009\
Install mental ray satellite:	Yes
Mental ray TCP port number:	7509

Print

< Back Install Cancel

7. Po uspešni nekajminutni instalaciji se odpre pogovorno okno 'Instalation complete'. Na koncu piknemo le še gumb »Finish« in na namizju se pojavi 3ds Max Design 2009 zagonska ikona.

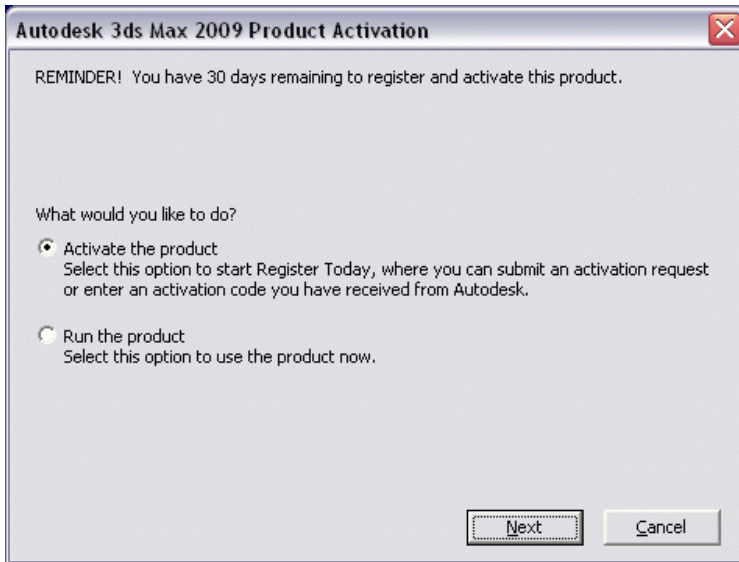
OPOMBA!

Vkolikor se med instalacijo računalnik samodejno ponovo zažene, ponovimo celotni postopek instalacije programa od samega začetka!

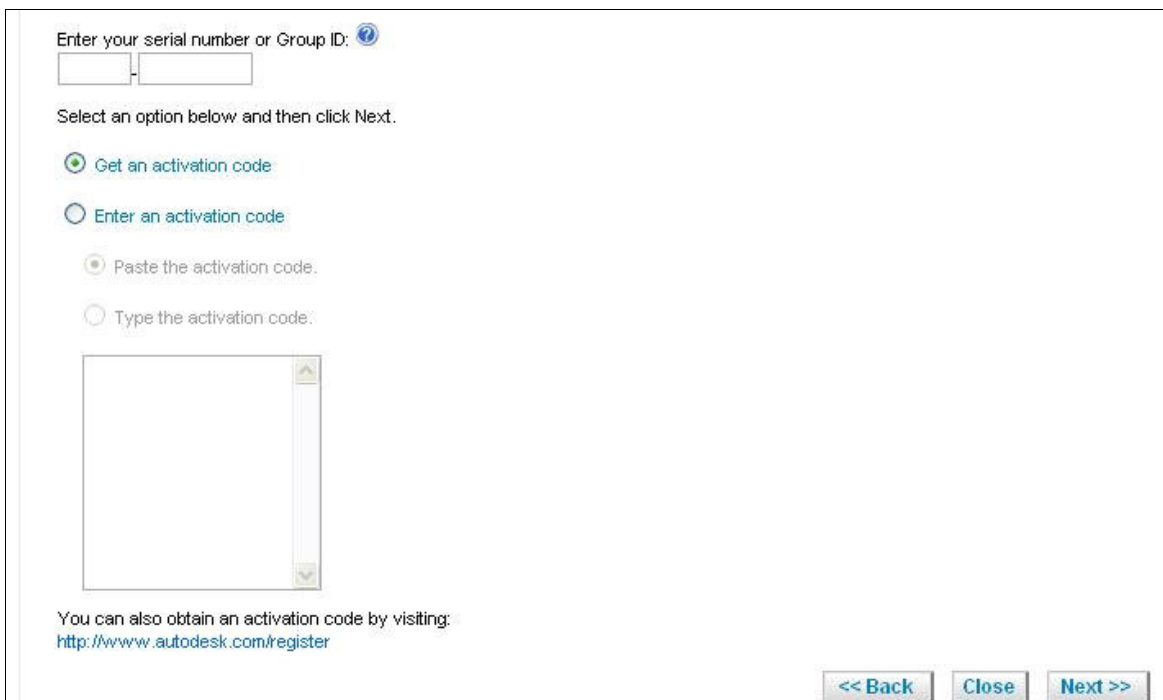
AKTIVACIJA PROGRAMA:

Ob zagonu programa nas bo ta pozval, da ga v roku 30-ih dneh uradno registriramo. To storimo na naslednji način:

1. V pogovornem oknu za aktivacijo izberemo »**Activate the product**« in nato gumb NEXT.



2. V oknu 'Activation' pod 'Enter your serial number' ponovno vpišemo našo serijsko številko in nato piknemo gumb NEXT. (Pred tem mora biti vzpostavljena internetna povezava!)



3. Zadnje okno 'Registration-Activation Confirmation' nam javi uspešno aktivacijo, kar na koncu še potrdimo na gumbu FINISH.